

1 Rhythm

/15

1.1 (a) $\frac{4}{4}$ (3)

(b) $\frac{2}{4}$

(c) $\frac{3}{4}$

1.2 (5)



1.3 (a) 6 (2)

(b) 4

1.4 (1)



1.5 (3)

1.6 (1)

2 Pitch /15

2.1 (a) F# (b) F (c) C# (7)

(d) A (e) Bb (f) G

(g) E

2.2 (4)

(a) (b) (c) (d)

2.3 (a) (b) (c) (d) (4)

3 Keys and Scales /15

3.1 (1)

3.2 (1)

3.3 (3)

3.4 (2)

3.5 (a) TRUE (4)

(b) FALSE

(c) TRUE

(d) FALSE

3.6 (1)

3.7 FALSE (1)

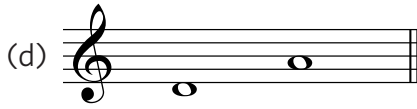
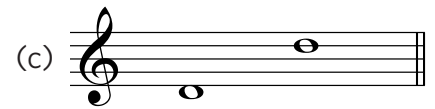
3.8 (2)

4 Intervals

/10

4.1

(5)



4.2 (a) 3rd

(b) 8th/8ve

(c) 4th

(5)

(d) 7th

(e) 5th

5 Tonic Triads

/10

5.1 (a) **TRUE**

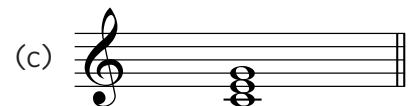
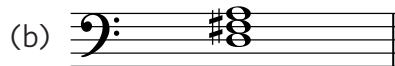
(3)

(b) **FALSE**

(c) **FALSE**

5.2

(3)



5.3 (a) F major

(4)

(b) G major

(c) D major

(d) C major

6 Terms and Signs

/5

staccato means:

detached

decrescendo means:

gradually getting quieter

Adagio means:

slow

(5)

mp means:

moderately quiet

$\text{♩} = 120$ means:

120 crotchet beats in
a minute

7 Music in Context

/5

7.1 FALSE

(1)

7.2 bar 2

(1)

7.3 (a) semibreve

(3)

(b) bar 7

(c) G